

The lantern has a rectangular shaped housing made of heavy gauge non corroddible aluminum alloyed and polyester powder coated for corrosive environment protection, combines strength, reliability and optimum photometric performance using LED technology minimizes light emission towards the upper hemisphere and provides a high degree of protection (IP66). It contains no hazardous materials for friendly environment. It provides a 20 to 30 percent reduction in system energy consumption and reduces maintenance frequency and has an estimated service life of more than 50,000 hours rated life (more than 10 years). Surge Protection 10 kV.

### Applications

For roadway lighting, urban environments, government & municipal, pedestrian & recreation, or public facility lighting

### LED Driver

The LED driver is situated in an independently mounted compartment in the optical assembly

### Optics

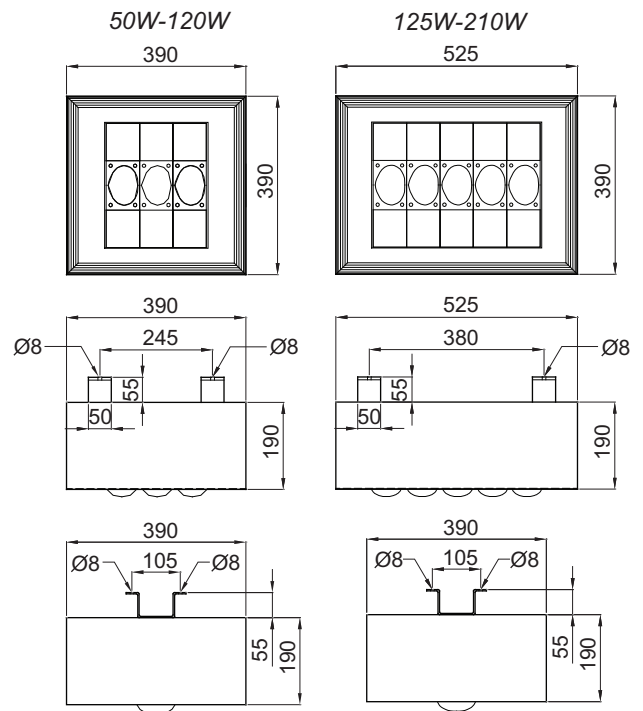
Optical made from borosilicate glass(pyrex) assembly hermetically sealed providing IP66 protection & replaceable  
CRI >70, CCT 3000, 4000 or 5000 Kelvin, 120 lm/W. Type II Streetlight

### Life time

50,000 hours

### Mounting

Ceiling



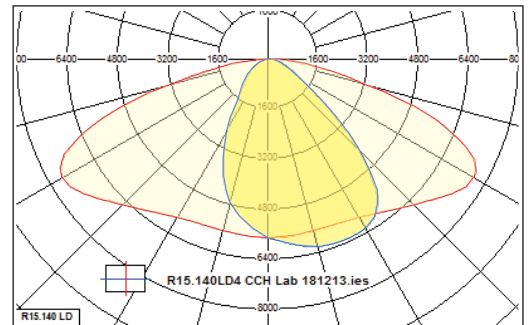
Dimensions in mm.

## ORDER CODE

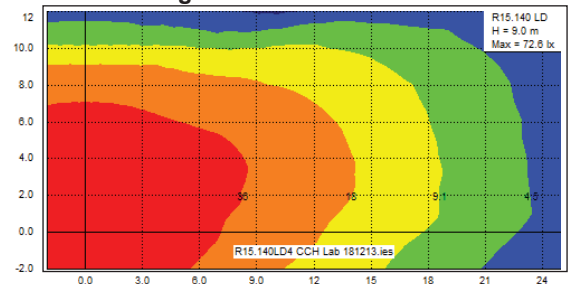
Type	Lamp
R30.50.LD	LED 50 W.
R30.55.LD	LED 55 W.
R30.60.LD	LED 60 W.
R30.65.LD	LED 65 W.
R30.70.LD	LED 70 W.
R30.75.LD	LED 75 W.
R30.80.LD	LED 80 W.
<hr/>	
R30.85.LD	LED 85 W.
R30.90.LD	LED 90 W.
R30.95.LD	LED 95 W.
R30.100.LD	LED 100 W.
R30.105.LD	LED 105 W.
R30.110.LD	LED 110 W.
R30.115.LD	LED 115 W.
R30.120.LD	LED 120 W.
<hr/>	
R30.125.LD	LED 125 W.
R30.130.LD	LED 130 W.
R30.135.LD	LED 135 W.
R30.140.LD	LED 140 W.
R30.145.LD	LED 145 W.
R30.150.LD	LED 150 W.
R30.155.LD	LED 155 W.
R30.160.LD	LED 160 W.
<hr/>	
R30.165.LD	LED 165 W.
R30.170.LD	LED 170 W.
R30.175.LD	LED 175 W.
R30.180.LD	LED 180 W.
R30.190.LD	LED 190 W.
R30.200.LD	LED 200 W.
R30.210.LD	LED 210 W.

Complete custom design, and photometric data available upon request

### Polar Curve



### Iso-Lux Diagram



RD-RL-029/Rev./No.01